

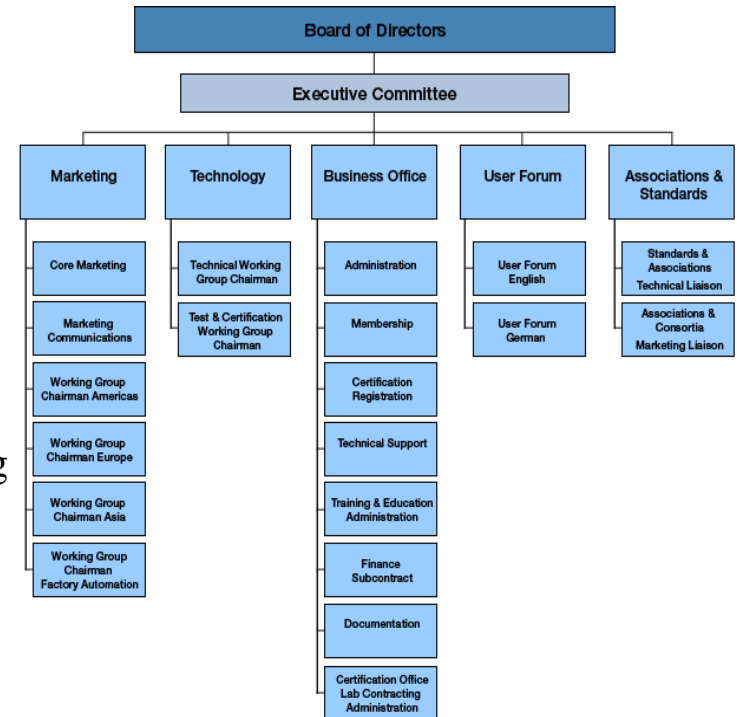
Device set up and commissioning

...using an FDT – Field Device Tool



The FDT Group

- The FDT Group formed in 2003
 - open
 - independent
 - non-profit
 - association of 61 international companies
- Owner of the **FDT Technology**
- Responsible for maintenance, further development, and promotion of FDT Technology
- Responsible for certification and compliance testing of FDT products
- Dedicated to establishing and maintaining FDT Technology as an **international standard** with broad acceptance within the automation industry
- **Open** to all companies that wish to participate



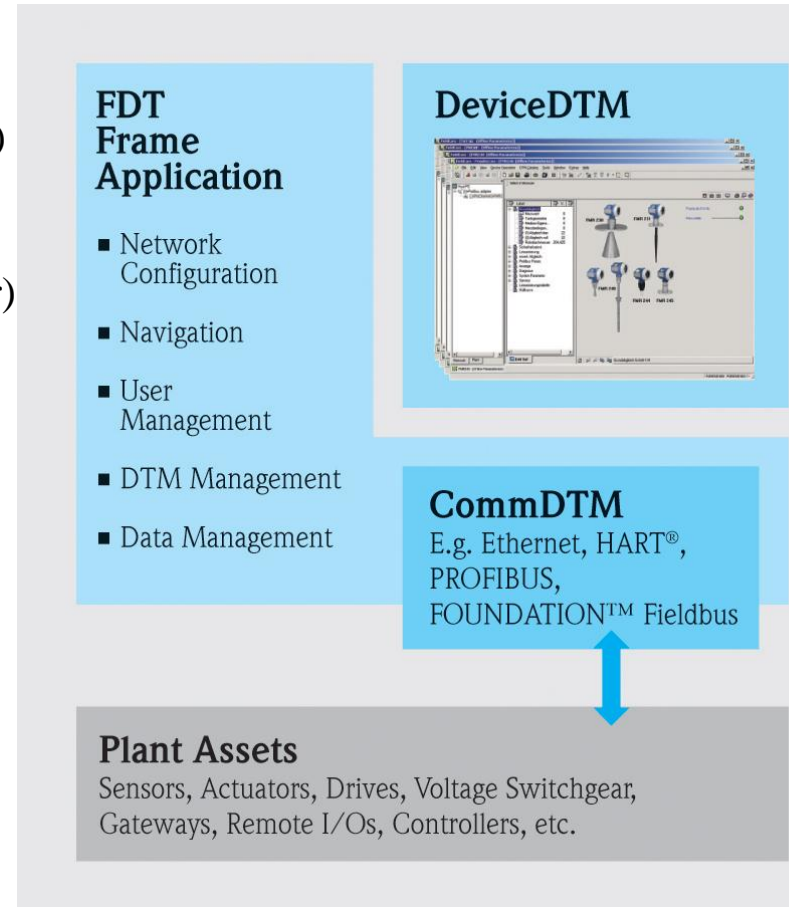
www.fdtgroup.org

FDT Group members

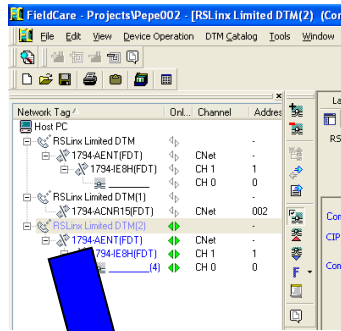


What is FDT/DTM?

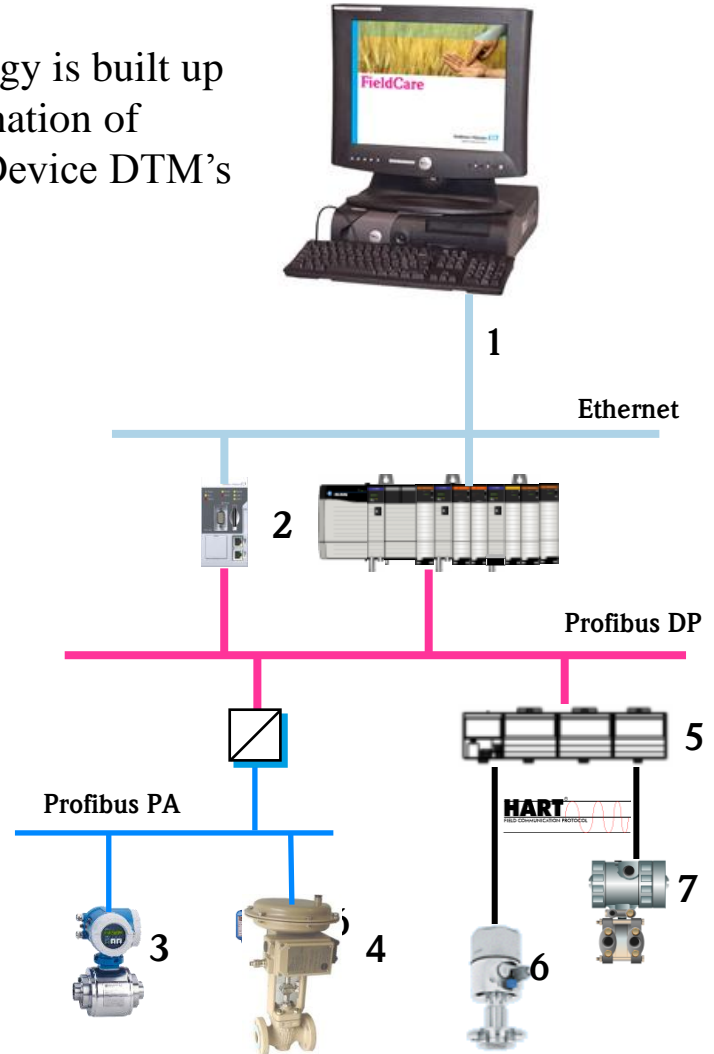
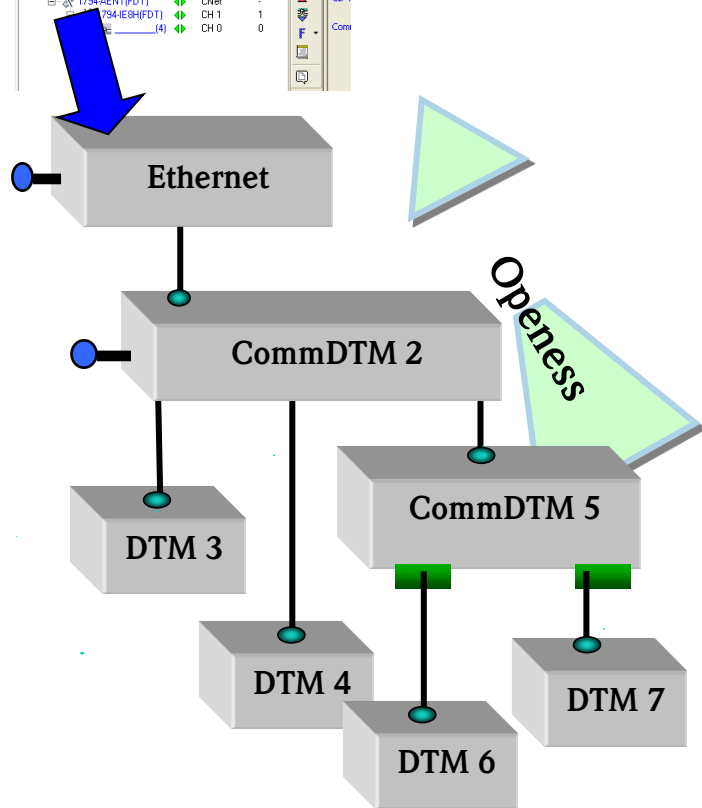
- **FDT / DTM**
 - **FDT** = Field Device Tool (frame application)
 - Follows a published standard specification
 - **DTM** = Device Type Manager (device driver)
 - Compatible with an FDT frame application
- **Open** standardised technology independent of device or system supplier
- **Independent** of device type sensor, actuator, remote I/O, drives, etc.
- **Full support** of installed base
- **Independent** of communication protocol Ethernet, HART, PROFIBUS, Foundation Fieldbus, etc.
- Vertical integration by nested communication



How does FDT/DTM technology work?



The network topology is built up using a combination of CommDTM's and Device DTM's



Device set up and commissioning

